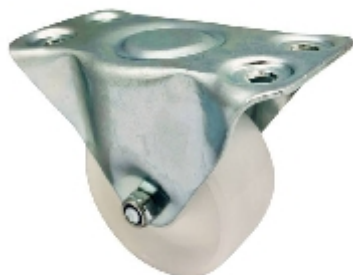






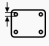
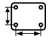


Fixed:

438a 00G058n ZPS

RHOMBUS 



Dane techniczne

Średnica		58 mm
Szerokość bieżnika		29 mm
Wysokość montażowa		75 mm
Prostopadłość		95x54 mm
Grubość otworu na śrubę		6,5 mm
Odległość pomiędzy otworami na śruby (SE)		71x24 mm
Nośność		80 kg
Weight		195 g