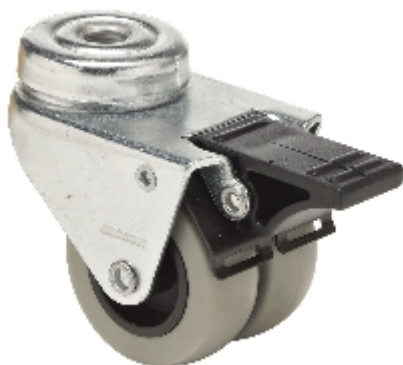


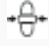








Rolka obrotowa z całkowitą blokadą, umieszczona za kółkiem: BDPU 0505 1000 TWIN



Dane techniczne

Średnica		50 mm
Szerokość koła		18 x 2 mm
Hub length		40 mm
Wysokość montażowa		71 mm
Wysunięcie		28 mm
Średnica otworu mocującego		10.5 mm
Brake swivel radius		83 mm
Nośność		100 kg
Weight		0.26 kg

