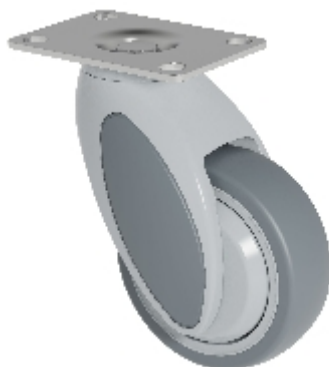






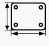
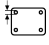
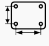


Swivel:

KSL2-41C-P95(VIVAX 2.0)

ASO



Dane techniczne

Średnica		100 mm
Szerokość koła		32 mm
Wysokość montażowa		142,5 mm
Wysunięcie		46 mm
Wymiary		95x70 mm
Grubość otworu na śrubę		8,5 mm
Odległość pomiędzy otworami na śruby (SE)		75x50/72x52 mm
Nośność		100 kg
Waga		600 g

